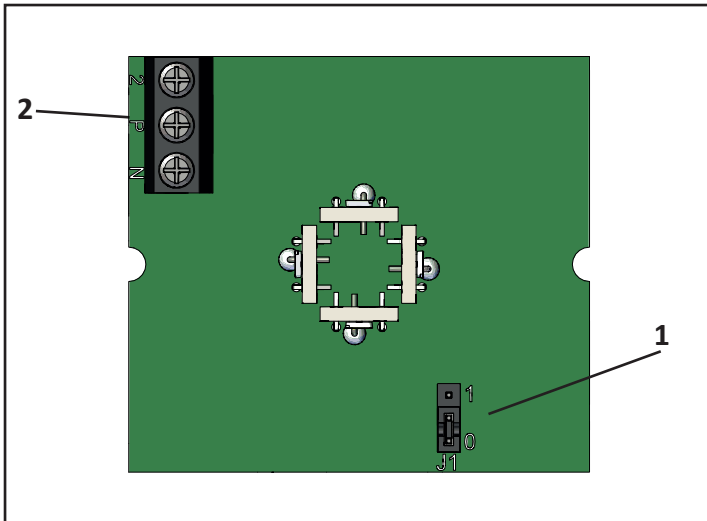



# PSL/SML Pulsed/Static LED Beacon



**1**



TERMINAL 2	J1	FUNCTION
N/C	0	STATIC
CONNECTED TO +/-L	0	FLASHING
N/C	1	FLASHING
CONNECTED TO +/-L	1	STATIC

**2**

		PSL/DC/12-36/SML
Beacon Supply	-ve (0V)	
	+ve (10-40Vdc)	
Alt Function	Connect to + for Alternate Function	

		PSL/UC/115-230/SML
Beacon Supply	N	
	P (98-264Vac/dc)	
Alt Function	Connect to P for Alternate Function	

